


# ASSEMBLY INSTRUCTIONS

## CROWNMARK : B4350-2 NIGHT STAND




### (BOX 1)

#### BOX OF NIGHT STAND

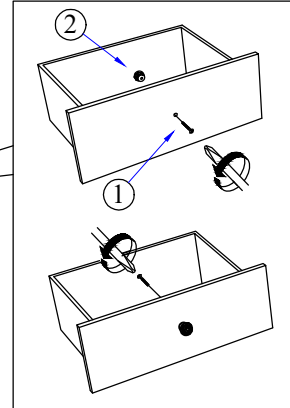
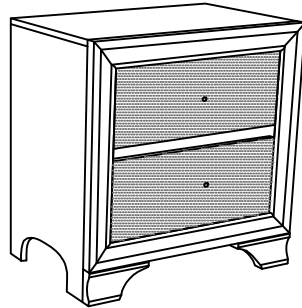
NO	ITEM	QTY
	NIGHT STAND	
A		1 PC

### (BOX 1)

#### HARDWARE LIST

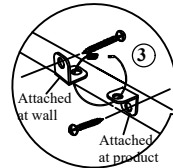
NO	ITEM	QTY
1	Truss Head Machine Screw m4x28mm Blk 	2 PCS
2	HANDLE 	2 PCS
3	Tipping Restraint 	1 PC

**STEP 1 :** Remove HANDLE ( 2 ) using a Philips head screw driver as shown in illustration STEP - A. Re-install the HANDLE ( 2 ) as per diagram STEP - B. Repeat STEP - A STEP - B until HANDLE ( 2 ) are attached correctly.  
THE HARDWARE IS LOCATED IN THE PACKING ITEM  
THE ANTI- TIPPING HARDWARE IS LOCATED IN THE TOP DRAWER.

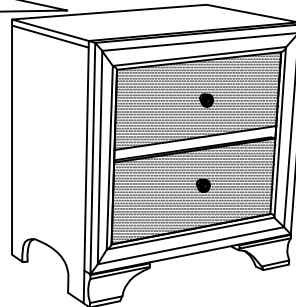


STEP - A

STEP - B



Anti - Tip Kit



**COMPLETED ASSEMBLY**

NOTE : Periodically check to ensure that all connectors (bolts, screws, etc.) are tight.