



# ASSEMBLY INSTRUCTIONS

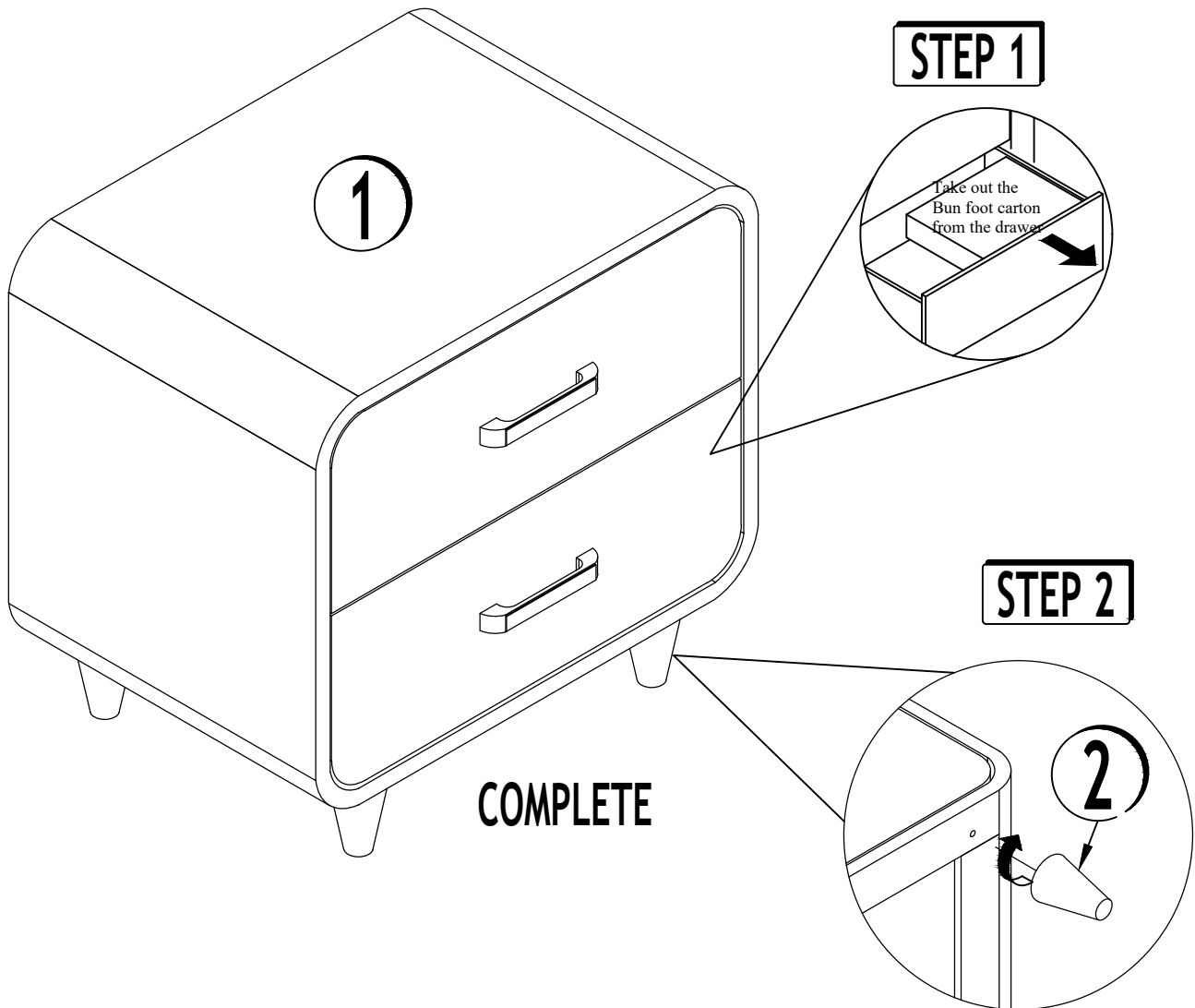
## B4900-2

### NIGHTSTAND

(BOX 1) - BOX OF NIGHT STAND			
PARTS LIST			
NO.	DESCRIPTION	SKETCH	QTY
1	NIGHT STAND		1
2	BUN FOOT		4

#### IMPORTANT NOTE :

- \* Place all wooden parts on a clean and smooth surface such as a rug or carpet to avoid the parts from being scratched.
- \* Check to be sure that you have all parts and hardware.
- \* Remove all wrapping materials, including staples & packing straps before you start to assemble.
- \* Do not tighten all screws/bolts until all completely assembled.
- \* Keep all hardware parts out of reach of children.



**COMPLETE**

PERIODICALLY CHECK TO ENSURE THAT ALL CONNECTORS(BOLTS,SCREWS,ETC.)ARE TIGHT  
THE ANTI TIPPING HARDWARE IS LOCATED AT THE TOP DRAWER OF NIGHTSTAND

THE HARDWARE IS LOCATED IN THE PACKING ITEMS