







# ASSEMBLY INSTRUCTIONS

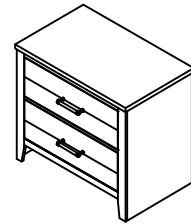
ITEM NO : B8170 - 2 NIGHT STAND

## BOX OF NIGHT STAND

ITEM	DRAWING	DESCRIPTION	QTY
A		NIGHT STAND	1

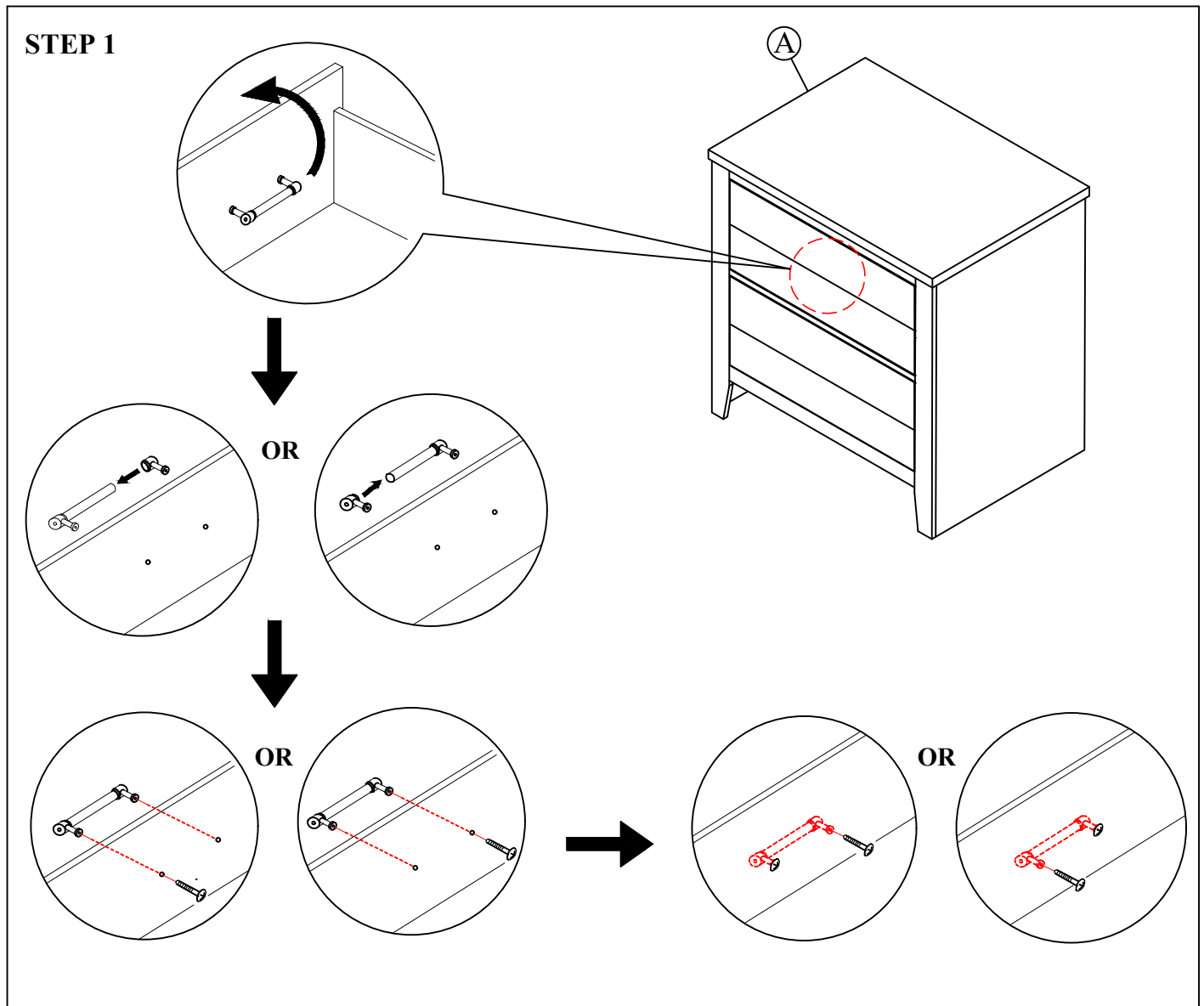
## HARDWARE LIST

ITEM	DRAWING		QTY
1		SHORT ROUND HEAD SCREW (#8 x 5/8")	1
2		LONG ROUND HEAD SCREW (#8 x 2")	1
3		CABLE TIE	1
4		L BRACKET	2
5		Assembly Tool Not Included	1



**COMPLETED NIGHT STAND  
ASSEMBLY**

## STEP 1



THE ANTI TIPPING HARDWARE IS LOCATED IN THE TOP FRONT DRAWER OF THE NIGHT STAND.

NOTE : Periodically check to ensure that all connectors (bolt, screws, etc.) are tight.

## CLEANING INSTRUCTION

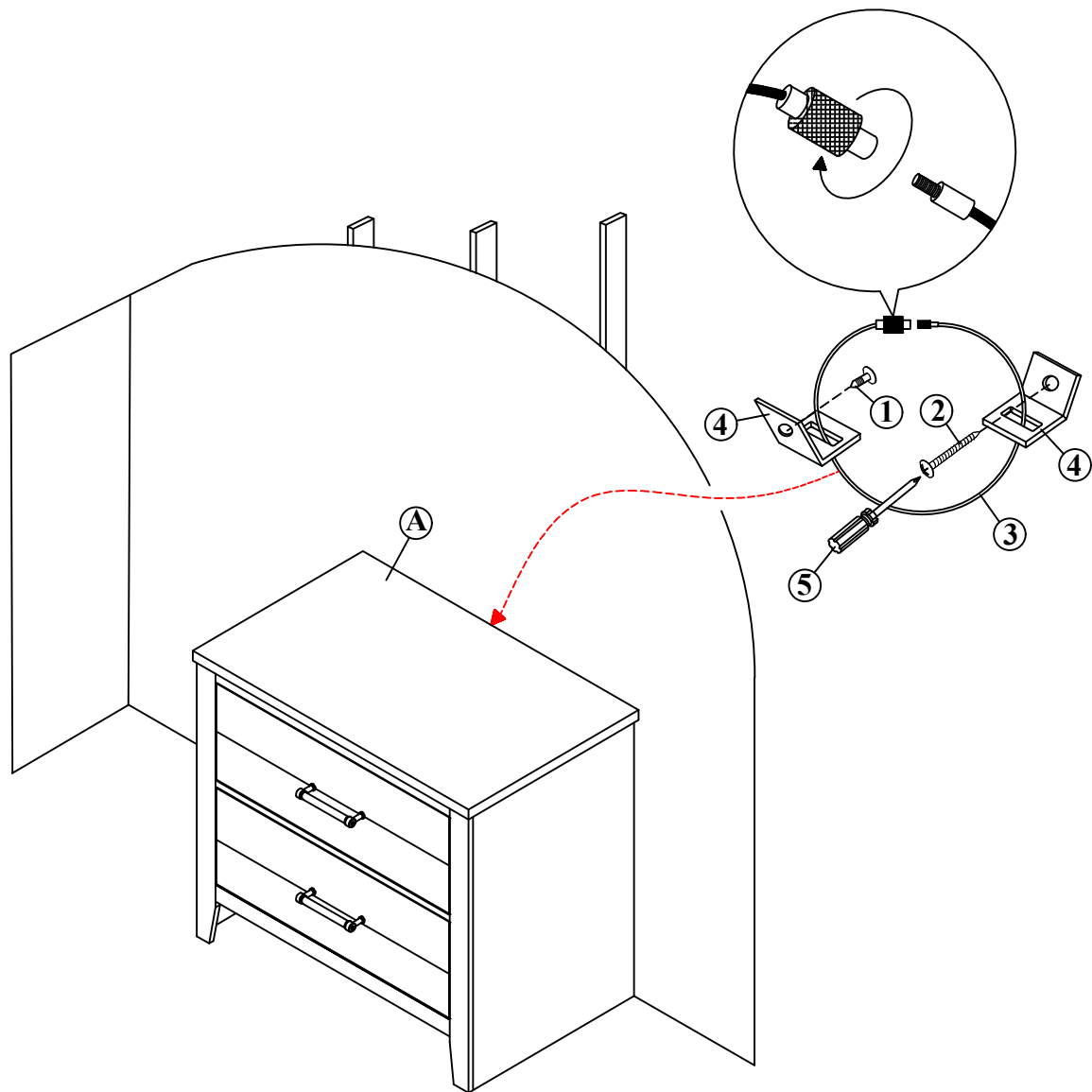
After assembly, clean & polish the completed parts if necessary with soft cloth and industrial recognized furniture polish

MADE IN MALAYSIA

# ASSEMBLY INSTRUCTIONS

ITEM NO : B8170 - 2 NIGHT STAND

## STEP 2



THE ANTI TIPPING HARDWARE IS LOCATED IN THE TOP FRONT DRAWER OF THE NIGHT STAND.

NOTE : Periodically check to ensure that all connectors (bolt, screws, etc.) are tight.

### CLEANING INSTRUCTION

After assembly, clean & polish the completed parts if necessary with soft cloth and industrial recognized furniture polish

MADE IN MALAYSIA