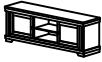






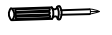
ASSEMBLY INSTRUCTIONS

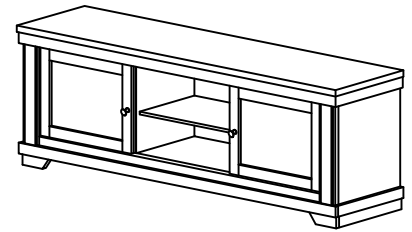
ITEM NO : B8180- 9 TV STAND

BOX OF TV STAND

ITEM	DRAWING	DESCRIPTION	QTY
A		TV STAND	1

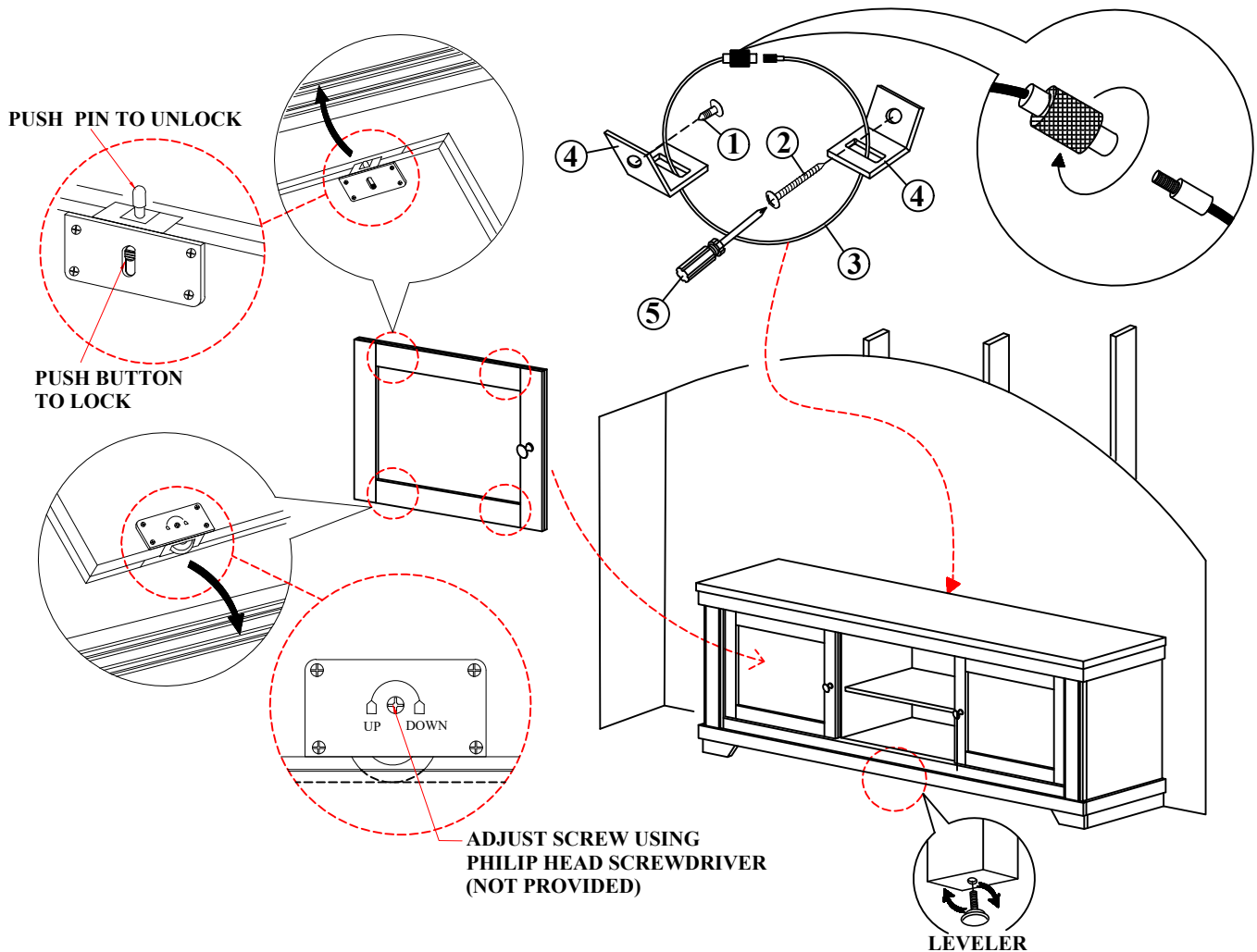
HARDWARE LIST

ITEM	DRAWING	DESCRIPTION	QTY
1		SHORT ROUND HEAD SCREW (#8 x 5/8")	1
2		LONG ROUND HEAD SCREW (#8 x 2")	1
3		CABLE TIE	1
4		L BRACKET	2
5		Assembly Tool Not Included	1



**COMPLETED TV STAND
ASSEMBLY**

NOTE : DOORS ARE PRE-ASSEMBLED. ADJUST THE DOOR GLIDES TO LEVEL THE DOOR IF NECESSARY



NOTE : ADJUST THE LEVELER ONLY IF IT IS BEING PLACED ON UNEVEN SURFACE.

THE ANTI TIPPING HARDWARE IS LOCATED IN THE BACK PANEL OF THE TV STAND.

NOTE : Periodically check to ensure that all connectors (bolt, screws, etc.) are tight.

CLEANING INSTRUCTION

After assembly, clean & polish the completed parts if necessary with soft cloth and industrial recognized furniture polish

MADE IN MALAYSIA