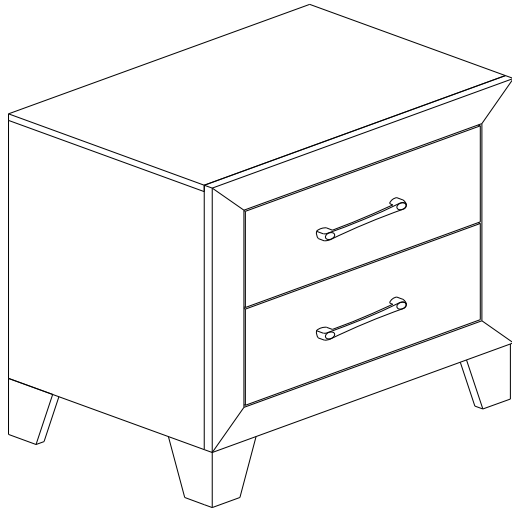



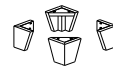
# NIGHT STAND




## B9310 / B9320-2 Night Stand

Thank you for purchasing this quality product . Be sure to check all packing material carefully for small parts that may have come loose inside the carton during shipment.

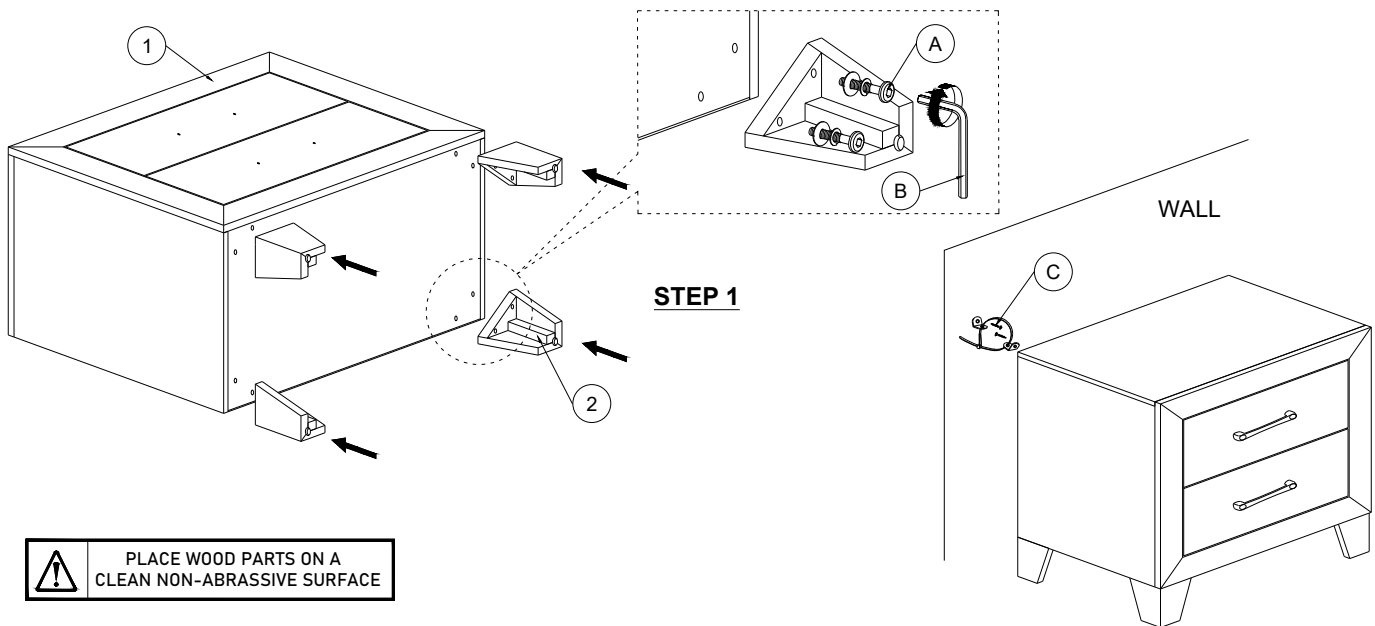
**\*\*Do not fully tighten screws until fully assembled\*\***




Box of Night Stand		
NO	DESCRIPTION	QTY
<b>1</b>	 NIGHT STAND	<b>1</b>
<b>2</b>	 CASEGOODS LEG	<b>4</b>

Box of Night Stand - Hardware List		
<b>A</b>	 JCBC BOLT M6 x 1.0 x 40 mm	<b>8</b>
<b>B</b>	 ALLEN KEY - M4	<b>1</b>
<b>C</b>	 ANTI-TIPPING HARDWARE KIT	<b>1</b>

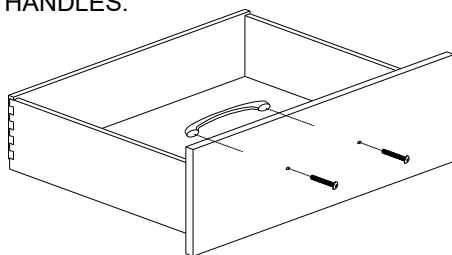
### COMPLETE ASSEMBLY



 PLACE WOOD PARTS ON A CLEAN NON-ABRASSIVE SURFACE

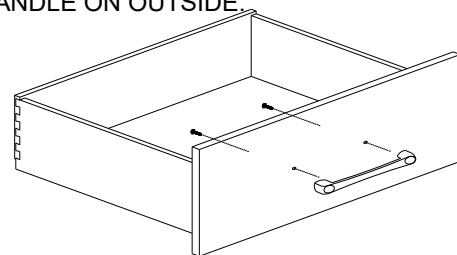
#### **STEP 2**

REMOVE HANDLES.



#### **STEP 3**

REFIX HANDLE ON OUTSIDE.



The Hardware is Located in the Packing Items.  
The Anti Tipping Hardware is Located in the Night Stand 1st Drawer.

NOTE : Pictures for illustration purpose only.

**MADE IN MALAYSIA**